

16W LED Downlight

DATA SHEET



1. Applications :

Area: In door use only

Purpose: down light

Features:

- Unique design for perfectly optical performance
- Cool beam avoids heat degeneration.
- UV or IR free.
- Optimized thermal management.
- High-voltage isolation and switching mode power designs give high-efficient and constant current source.

2. Specification :

Outline Dimension: ϕ 180x 107mm (L)

LED Light Source : 1W x 16ea (Nichia 083BT)

Color Temp.: 5200 \pm 400 K / 3000 \pm 300 K

Beam Angle: 105 degree/60 degree

Input Voltage: 100~240 Vac

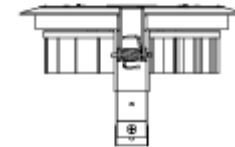
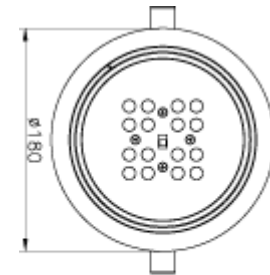
Power Consumption: 23W max.

Net Weight: 990g

Operation Temp : -20°C~40°C

3. Packaging information :

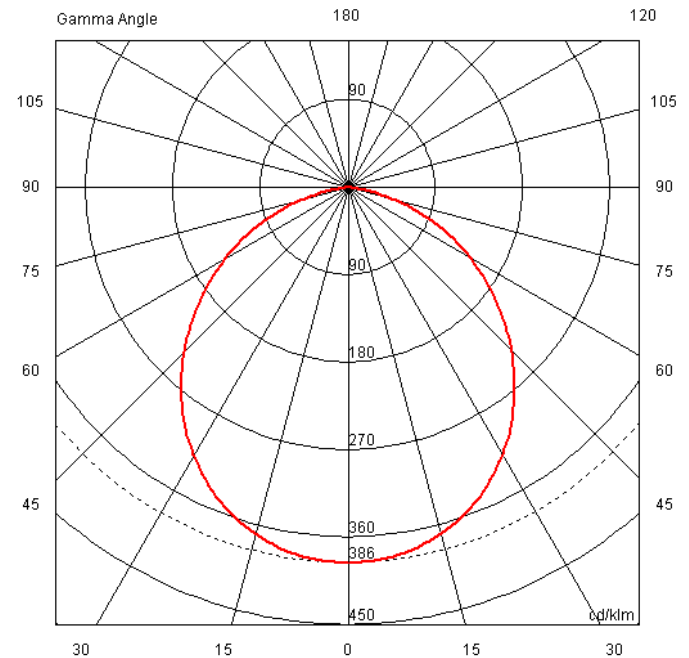
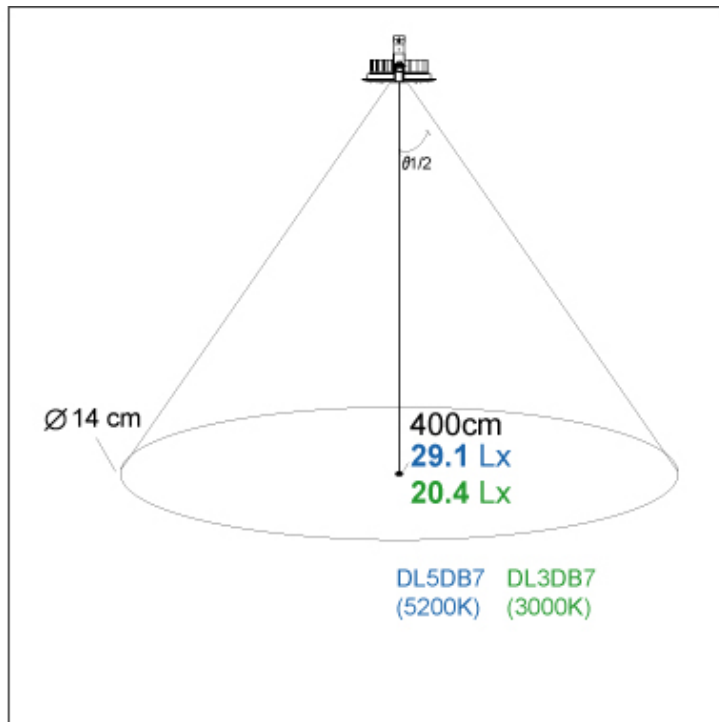
Packing: 12 boxes /carton		
box	220x205x130(mm)	1100g
carton	825x422x264(mm)	13.5kg



4. Optical performance :
 4.1 Beam Angle= 105 degree

Color Temp.	Model Number	Beam Angle ($2\theta_{1/2}$)	Output Lumens	CRI
5200± 400K	AKDL5DB7	105 degree	1206 Lm	70
3000± 300K	AKDL3DB7	105 degree	845 Lm	75

Note: Data are measured after lighting up 60min

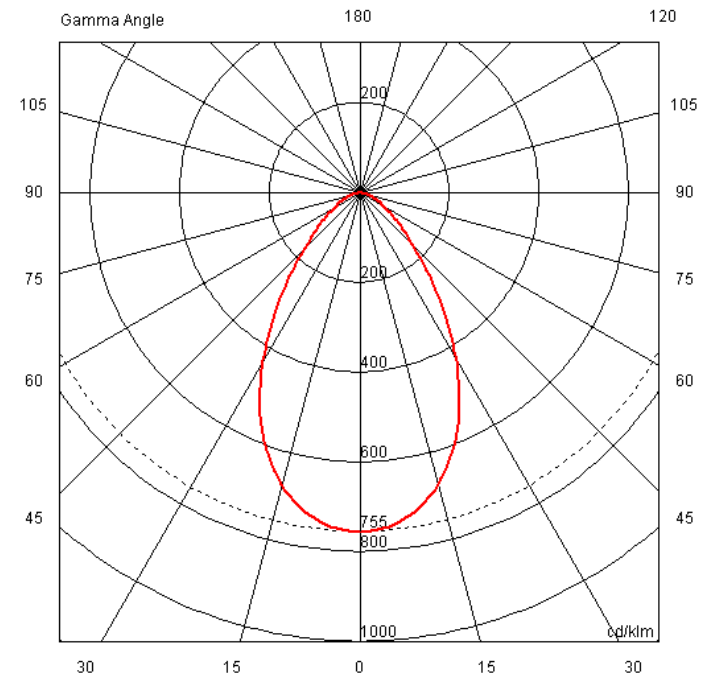
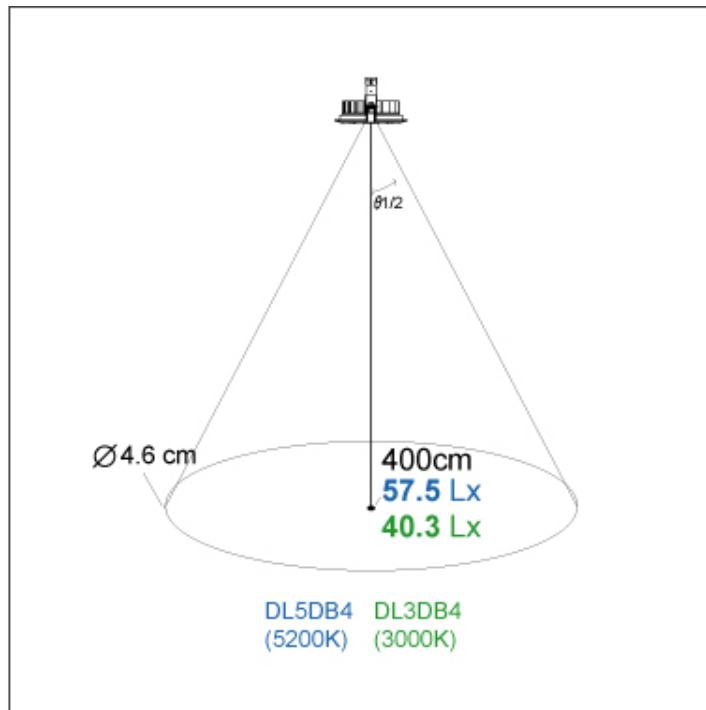


$\theta_{1/2}$ is the off axis angle from luminaries centerline where the intensity is half of the peak value.

4.2 Beam Angle= 60 degree

Color Temp.	Model Number	Beam Angle ($2\theta_{1/2}$)	Output Lumens	CRI
5200± 400K	DL5DB4	60 degree	1218 Lm	70
3000± 300K	DL3DB4	60 degree	853 Lm	75

Note: Data are measured after lighting up 60min



$\theta_{1/2}$ is the off axis angle from luminaries centerline where the intensity is half of the peak value.

5. Operation manual :

- Ceiling hole is recommended to drill 167mm diameter.
- This product is designed to safety operation with the main voltage between 100~240 Vac.

6. Safety warning :

- Aluminum fixture surface temperature will reach to 55 °C@30°C still-air environment as operating.
- To reduce the risk of electric shock, do not disassemble this appliance.
- Do not expose the product to the rain or high humidity environment. It is designed for in door use only.

7. Installation guide :

Drill a hole and then through the luminaire, using the claspers to clamp the ceiling.

8. Estimated life time : 50,000 hours