

PRAHA
LIGHTING
V. 2018



**STREET &
ARCHITECTURAL
LIGHTING**

**LED
TECHNOLOGY**

- Street, municipal, industrial and commercial lighting.
- Facades, public buildings, monuments, historical sites, cathedrals and museums designs.

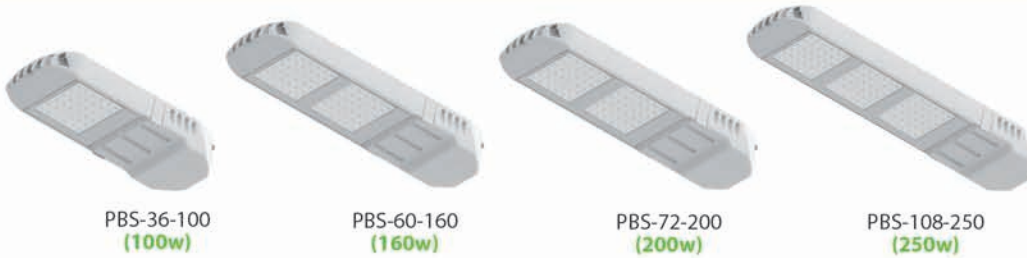
Why Praha?

- > Exceptional energy efficiency (lumens / watt). Up to 110 Lm/w.
- > Unbeatable light coverage with wide variety of distribution lenses.
- > Maintenance free due its long life of more than 20 years.
- > Extended 10 years warranty, due its highest quality components.
- > Maintenance free due its long-lasting components.
- > Integral control and attenuation.
- > LED systems with 100,000 hours of life.
- > Made in Mexico with more than 75% of national integration.
- > Complies with current Mexican standards.
- > Optional accessories such as photocells, remote management systems, arms and mounting posts, surge suppressors and more.

We offer an Integral solution with the most complete line of products.

> PLATINUM LINE • Medium and high power systems

STREET LIGHT Street lighting



Variable Inclination: -5° to +15°



STREET LIGHT Hanging / Mounting



> IRON LINE • Low and medium power systems



IRON

Model	Power
INS-24-60	60w
INS-24-80	80w
INS-30-100	100w
INS-30-120	120w
INS-30-150	150w

Variable Inclination: -5° to +15°



IRON MINI

Model	Power
INS-12-20	20w
INS-12-30	30w
INS-12-40	40w
INS-12-50	50w
INS-12-60	60w
INS-12-70	70w

MERCURY LINE

MERCURY I

Low and medium power systems with COB type led



Model	Power
MCS-1-50	50w
MCS-1-60	60w
MCS-1-70	70w

MERCURY II

Medium and high power systems with COB type led



Model	Power
MCS-2-100	100w
MCS-2-120	120w
MCS-2-140	140w
MCS-2-160	160w

Variable angle system: -90° to +90°



It can be used as a pole head



MERCURY MINI

Low power systems with COB type led



Model	Power
MCS-1-20M	20w
MCS-1-30M	30w
MCS-1-40M	40w
MCS-1-50M	50w
MCS-1-60M	60w

Variable Inclination: -5° to +15°



IRIDIUM A LINE

- Vintage type, dirigible lens system available with symmetrical and asymmetrical distribution lenses.
 - Type I Medium, Type II Short or Medium, Type V, Street Lighting Lenses. Ensuring that light is projected where it is required.



IAL-1-40 (COB type) (40w) IAL-2-80 (COB type) (80w) IAL-4-160 (COB type) (160w)

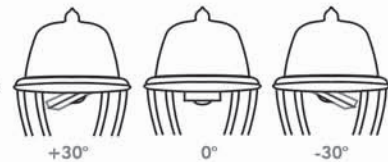
Mounting Option:



Hanging Option:



- Dirigible lenses: -30° a +30°



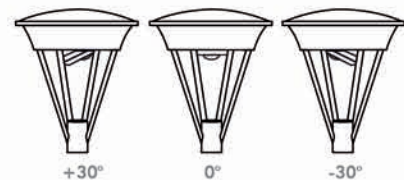
IRIDIUM B LINE

- Modern type, dirigible lens system available with symmetrical and asymmetric distribution lenses.
 - Type I Medium, Type II Short or Medium, Type V, Street Lighting Lenses. Ensuring that light is projected where it is required.



IBL-1-40 (40w) IBL-2-80 (80w) IBL-4-160 (160w)

- Dirigible lenses: -30° a +30°



OPTIONAL ACCESSORIES



BFC-NEMA
NEMA 3 PIN Photocell Base



LC2100MX
NEMA standard Photocell
Multivoltage: 90 to 277 V
Warranty: 2 years



ELC4536
NEMA Cadmium / Silver Photocell
10 years life. Multivoltage: 90 to 227 V
Warranty: 6 years



EK4536
NEMA Cadmium / Silver Photocell
15 years life. Multivoltage: 90 to 227 V
Warranty: 8 years



LED4536SC
NEMA Cadmium / Silver Photocell
20 years life. Multivoltage: 90 to 277 V
Warranty: 12 years



MXSL-TC
Control and remote
monitoring telecell



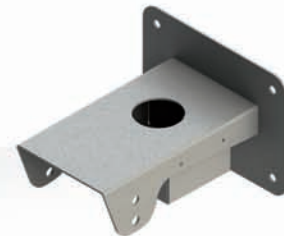
MXSL-MSP
Mini standard photocell
120 or 220 V



MSP-10K
10 KV / 10 KA Secondary Electrical
Discharge Surge Arrester



CNR-314
IP 68 3-pin connector set
for easy service



MSWM-1
Wall bracket for Platinum line.
Includes photocell adapter

AUTHORIZED DEALER

For more information, visit:
www.prahalighting.com
info@prahalighting.com
Phone: +52(55) 5000-9470